



Auction

21 March 2026

Spring North Carolina Shell Club
meeting

Ocracoke Community Center
999 Irvin Garrish Hwy
Ocracoke, NC 2760

Viewing 6:30 PM

Auction begins 7:00 PM



The offerings profiled in the catalog feature many well-known and some lesser familiar species. Unless noted, all shells and related material are sourced from the Everett Long Estate collection which the shell club purchased from his wife several years ago.

Enjoy the adventure in shells and collecting while browsing the following pages. There is likely something that will be a centerpiece in your cabinet so save your pennies for the auction!

John Timmerman

Chair North Carolina Shell Club Oral Auctions

ncshellclub@gmail.com



The Basics

Minimum Bid Increments

\$1 to \$50 = \$1

\$50 to \$100 = \$5

\$100 to \$300 = \$10

\$300 and up = \$25

Bid increments higher than the minimum accepted

Even dollar increments within the ranges defined only

For lots of estimated high dollar value we may begin bidding greater than \$1.

Payment is due at close of the auction.

If you cannot make it to the auction, consider arranging for a friend to proxy in your behalf. The shell club does not offer proxy bidding service at this time.

Trade Concerns

Convention for the International Trade in Endangered Species (CITES)

Shells that are governed in trade by CITES II or III, are species of concern and noted as such. There are few restrictions on the trade of specimens already within USA, where the auction is taking place.

Importing and exporting of the species listed as CITES II or III are restricted. Most people do not bother wading through the myriad rules concerning trade to learn if by permit it can take place. Specimens marked as CITES II or CITES III thus are likely only available via existing collections that were acquired before the listing.

The auction does not include any shells or specimens listed under CITES I.

Additionally, there may be laws governing the export of specific shells from individual countries that also may be reflected in availability in our auctions. As with CITES II or III if a shell was already in USA via an older collection for example, there are no regulations concerning trade.



Photography, Color, Condition, Etc.

I have done my best to represent the shells accurately. There may be flaws in color, rendering and contrast. Computer screens may change the rendering of an image.

I try to note any defects observed. However, I am not infallible in spotting defects and or forgery via “shell doctoring.” I recommend attendance at the viewing prior to the auction to confirm what is communicated in the catalog.

What makes the auction possible?

The shell club is blessed by the generosity of many friends who provide donations of shells and related material that make the auctions possible. This auction includes specimens donated by Carnegie Mellon University, Mique Pinkerton (deceased), Doug Wolfe and Dave and Jody Watts, in addition to lots from the huge collection amassed by club member Everett Long (deceased).

Soon after Everett Long passed the North Carolina Shell Club had opportunity to purchase the entirety of his shell collection from his family. Credit as to donor is modified from my normal model to reflect that the shell club did pay money for the shells all be it at a very low rate. The collection was huge including many rare species. Everett self-collected, exchanged and purchased shells for his collection. This auction features many of those shells, often providing unique opportunity for a shell that will become the centerpiece of one’s collection. Credit for shells from Everett’s collection is as follows:

“Courtesy North Carolina Shell Club, Everett Long collection”

Gift of Carnegie Mellon University, Courtesy of Dr. Timothy Pierce. The shells lack source data thus were deaccessioned from the university collection. Club member Vicky Wall responded to an offer on conch-L and coordinated the donation to the shell club.

In the occasional instance where documentation of a donor has been lost, I show the following credit:

“Gift by Friends of North Carolina Shell Club”

Apologies to the donor(s) who may recognize a specimen or lot credited in this manner.

Science

In the instance where no collecting/source or data is included with the specimen I record it as “No Data.” It is followed by the general known range that it is from. While not useful for scientific study, the specimens remain attractive and desirable.

Reference consulted for the catalog

Compendium of Seashells, R. Tucker Abbott & S. Peter Dance, Third Printing

An invaluable first stop for identifying shells as well as popular names. If no popular name is shown it is due to the shell not being figured in this reference and my not finding one elsewhere.

Classifications confirmed during the month of December 2025 from these databases:

WoRMS: www.marinespecies.org

Molluscabase; www.molluscabase.org

Dimensions were taken with a mechanical dial caliper.



Lot 1



Scallop bi-catch collection from North Carolina dump sites

- 1, Reticulate Distorsio, *Distorsio reticularis* (Linnaeus, 1758) two shells, 35.3-53mm
- 2, Mansfields Murex, *Babelomurex mansfieldi* (T. L. McGinty, 1940) 4 shells, 17.5-30.4mm
- 3, Chestnut Frog Shell, *Marsupina bufo* (Bruguière, 1792) two shells, 26.5-28.6mm
- 4, Noble Sundial, *Architectonica nobilis* Röding, 1798 two shells, 18-27.1mm
- 5, American Pelican's Foot, *Arrhoges occidentalis* (H. Beck, 1836) 41.3mm
- 6, Giant Tun, *Tonna galea* (Linnaeus, 1758) 90.1mm
- 7, Lettered Olive *Oliva sayana* Ravenel, 1834 two shells, 46.2 – 76.5mm
- 8, Rose Murex, *Vokesimurex rubidus* (F. C. Baker, 1897) three shells, 21.4-49.8mm

Gift of Doug Wolfe and Courtesy of North Carolina Shell Club, Everett Long Collection



Lot 2

Pacific Lion's Paw

Nodipecten subnodosus
(G. B. Sowerby I, 1835) 140mm
orange is relatively scarce

Courtesy of North Carolina Shell Club, Everett Long Collection



Lot 3

Zebra Auger

Oxymeris strigata
(G. B. Sowerby, 1825)
Panama, 118.9mm

Gift of Mique Pinkerton



Lot 4

Rooster Conch, 2 shells

Aliger gallus (Linnaeus, 1758)
115-140mm, one with data, one no data

Gift of Carnegie Mellon

University,

Courtesy Dr. Timothy Pierce



Lot 5

Strombus Collection

- 1, Mutable Conch, *Canarium mutabile* (Swainson, 1821) 2 shells, 34-36.9mm
- 2, Samar Conch, *Tridentarius dentatus* (Linnaeus, 1758) 41.2mm
- 3, Hump-backed Conch, *Gibberulus gibberulus* (Linnaeus, 1758) 3 shells, 40.8-51.4mm
- 4, Bubble Conch, *Euprotomus bulla* (Röding, 1798) 2 shells, 52.4-63.8mm
- 5, Black-lipped Conch, *Euprotomus aratum* (Röding, 1798) w/op., 77.5mm
- 6, Swan Conch, *Dolomena epidromis* (Linnaeus, 1758)) ex. Carnegie Mellon collection, two shells, 51.8-56.2mm
- 7, Strawberry Conch, *Conomurex luhuanus* (Linnaeus, 1758) 53.7mm
- 8, Vittate Conch, *Doxander vittatus* (Linnaeus, 1758) 3 shells, 72.1-90.8mm
- 9, Japanese Conch, *Doxander japonicus* (Reeve, 1851) ex. Carnegie Mellon, 70.2mm
- 10, *Doxander vittatus* (Linnaeus, 1758) 2 shells, ex. Carnegie Mellon, 88.9-93.9mm

Gift of Carnegie Mellon University,

Courtesy Dr. Timothy Pierce

Courtesy of North Carolina Shell Club, Everett Long Collection



Lot 6

Brown Paper Nautilus, 3 shells

Argonauta hians [Lightfoot], 1786
Taiwan 30.4-41.4mm

Gift of Mique Pinkerton

Lots 9 & 10

In the mid 1970's I patronized a wonderful shell store, located in New York City, "Seashells Unlimited". It was owned and operated by Veronica Parker Johns. A dark appearing storefront located in Manhattan, inside, an abundance of shells displayed floor to ceiling in glass cabinets. Ms. Johns had cabinets at the rear of the store where customers were invited to pull out trays of shells. In one of the trays were a series of the largest *Mitra mitra* I had ever seen. I regret at the time not purchasing one or two of those shells. There was just too much to select from!



Lot 9

Episcopal Miter, 2 shells

Mitra mitra (Linnaeus, 1758)
87.1-132.6mm, Hawaii

Gift of Mique Pinkerton

Lots 7 & 8

The shell has an open umbilicus on each side. The feature is sometimes seen in juvenile *Nautilus pompilius* but in my opinion it confirms the trait of *Nautilus stenomphalus*. Research points to many more species of Chambered Nautilus than recognized at present. This species is sometimes attributed as a variant of *Nautilus pompilius*.



Lot 7

White-patch Nautilus, Juvenile CITES II

Nautilus stenomphallus
G. B. Sowerby II, 1849
60mm

No Data, Southwest Pacific-Philippines

Dead collected

Courtesy of North Carolina Shell Club, Everett Long Collection

Lot 8

White-patch Nautilus, Juvenile CITES II

Nautilus stenomphallus
G. B. Sowerby II, 1849
73.6mm

No data, lip trimmed, first chamber broken

Dead collected

Courtesy of North Carolina Shell Club, Everett Long Collection



Lot 10

Episcopal Miter, 3 shells

Mitra mitra (Linnaeus, 1758)
20-146.1mm, Philippines (baby) Hawaii, tiny baby and huge adult

Gift of Mique Pinkerton



Lot 11

Baker's Snipe's Bill

Haustellum longicaudum (F. C. Baker, 1891)
w/op., 115mm

Courtesy of North Carolina Shell Club, Everett Long Collection

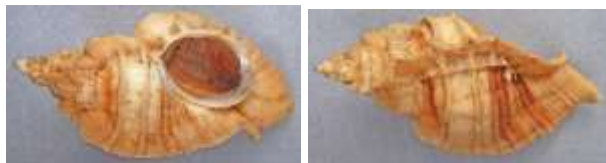


Lot 12

Kii Murex

Vokesimurex kiiensis (Kira, 1959)
95mm

Courtesy of North Carolina Shell Club,
Everett Long Collection



Lot 14

Foliate Purpura

Ceratostoma foliatum (Gmelin, 1791)
w/op., 73mm

Courtesy of North Carolina Shell Club,
Everett Long Collection



Lot 16

Barnacle Rock-shell

It has been overfished for the culinary trade.
Concholepas concholepas (Bruguère, 1789)
70mm

Courtesy of North Carolina Shell Club,
Everett Long Collection



Lot 13

- 1, Waved Goblet, *Polia undosa* (Linnaeus, 1758) 37.5mm
- 2, Miniature Triton Trumpet *Pisania pusio* (Linnaeus, 1758) five shells, 33.3-38.3mm
- 3, Flame *Pisania* *Ecmanis ignea* (Gmelin, 1791) six shells, 30.6-34.8mm
- 4, *Pisania tritonoides* (Reeve, 1846) three shells, 28.1-37mm

Courtesy of North Carolina
Shell Club, Everett Long
Collection



Lot 15

Spider Conch Collection

- 1, Orange Spider Conch, *Lambis crocata* (Link, 1807) two shells, 107.2-123.3mm
- 2, Common Spider Conch, *Lambis lambis* (Linnaeus, 1758), 142mm
- 3, Millipede Spider Conch, *Lambis millepeda* (Linnaeus, 1758) 134.6mm
- 4, Scorpio Conch, *Lambis scorpius* (Linnaeus, 1758) two shells, 134.6-140.6mm

Courtesy of North Carolina Shell Club,
Everett Long Collection
Gift of Carnegie Mellon University,
Courtesy Dr. Timothy Pierce





Lot 17

Miniature Shells Collection, 24 species
**Courtesy of North Carolina Shell Club,
Everett Long Collection**



Lot 19

Monodon Murex, 2 shells
Chicoreus cornucervi (Röding, 1798)
w/op., 80.4-83mm
**Courtesy of North Carolina Shell Club,
Everett Long Collection**



Lot 18

Pacific Geoduck

Dr. Wolfe found this shell which was likely discarded by a fisherman when the tasty mollusk was prepared for the culinary trade.

Panopea generosa A.A. Gould, 1850

Poulsbo, Washington, Puget Sound under fish house dock, by
DA Wolfe

184mm

Gift of Doug Wolfe



Lot 20

Asian Murex

Chicoreus asianus Kuroda, 1942

w/op., 110.5mm

**Courtesy of North Carolina Shell
Club, Everett Long Collection**



Lot 21

Taylor's Star-shell

A scarce South African shell

Bolma tayloriana

(E. A. Smith, 1880)

w/op., 71mm

**Courtesy of North
Carolina Shell Club,
Everett Long Collection**



Lot 22

Commercial Trochus or Button Top, 2 shells

The species was once an important resource for the manufacture of buttons. Both specimens are polished, revealing the inner layer of "Mother of pearl." A neat tidbit of history to include with the scientific collection.

Rochia niloticus (Linnaeus, 1758)

110-120mm no data

Gift of Carnegie Mellon University, Courtesy Dr. Timothy Pierce



Lot 23

Green Top, 3 shells

Tectus triserialis (Lamarck, 1822)

44.5-53.9mm Philippines

Gift of Mique Pinkerton

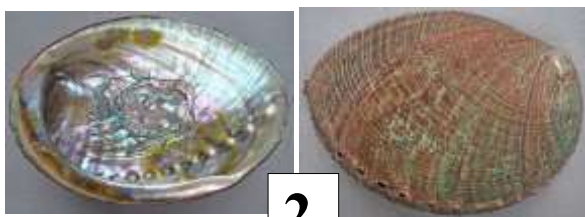


Lot 24

Latiaxis Collection

- 1, Japanese Latiaxis, *Babelomurex japonicus* (Dunker, 1882) 39.2mm Carnegie Mellon
- 2, *Coralliophila bulbiformis* (Conrad, 1837) 7.9mm
- Jeane's Latiaxis, *Babelomurex jeanneae* D'Attilio & B. W. Myers, 1984 w/op., 14.2mm
- 3, Hirase's Latiaxis, *Babelomurex hirasei* (Shikama, 1964) w/op., 13.1mm
- 4, *Babelomurex diadema* (A. Adams, 1854) w/op., 23mm

Courtesy of North Carolina Shell Club,
Everett Long Collection



Lot 26

Green Abalone, 2 shells

- 1, *Haliotis fulgens turveri* Bartsch, 1942, 180mm gerontic shell, Low quality but a scarce species, no data

Gift of Carnegie Mellon University,
Courtesy Dr. Timothy Pierce

- 2, *Haliotis fulgens guadalupensis* Talmadge, 1964 live taken Loreto, Mexico 136mm

Gift by Friends of North Carolina Shell Club



Lot 25

Fossils

Ever wonder what are the identity of the fossil shells found in the road opposite the National Park campground on Ocracoke are? Here is your chance to find out. These have not been used as road ballast and run over by trucks and cars!

Pliocene Florida 36 + identified species

Gift by Friends of North Carolina Shell Club



Lot 27

Red Abalone

- Haliotis rufescens* Swainson, 1822
167mm, off Loreto, Mexico

Gift by Friends of
North Carolina Shell Club



Lot 29



Lot 28

Saul's Murex

- Chicoreus sauliae* (Sowerby II, 1841)

No data, w/op., 103.1mm

Courtesy of North Carolina
Shell Club,
Everett Long Collection

Northern Moon

Though the shell lacks data, I include it due to the scarcity of recovering such a large example. I walked the beaches of Sandy Hook, New Jersey after nor'easters in the late 1980's where hundreds of this shell washed ashore. I could count very few that were this large. *Euspira heros* (Say, 1822) w/op., 100mm+ no data The species at 100mm is giant.

Gift by Friends of
North Carolina Shell Club



Lot 30 Murex Collection

- 1, Vokes' Murex, *Naquetia vokesae* (Houart, 1968) 50.5mm
- 2, Scorpion Murex, *Homalocantha scorpio* (Linnaeus, 1758) 39.2mm
- 3, *Vokesimurex elensis* (Dall, 1909) 65.5mm
- 4, Deer Antler Murex, *Chicoreus cervicornis* (Lamarck, 1822) 52.6mm
- 5, Prince Murex, *Hexaplex princeps* (Broderip, 1833) w/op., 90.1mm

Courtesy of North Carolina Shell Club, Everett Long Collection



Lot 31

Gever's Trophon, 2 shells

A variable species, at first glance they looked like two species.

Trophon geversianus (Pallis, 1774) one w/op., 38.3-43.7mm

Courtesy of North Carolina Shell Club,
Everett Long Collection



Lot 32

Latiaxis Collection

- 1, Jeane's Latiaxis, *Babylomurex jeanneae* D'Attilio & B. W. Meyers, 1984 27.5mm
- 2, *Babelomurex yumimarumae* Kosuge, 1985 26mm
- 3, Mansfield's Latiaxis, *Babelomurex mansfieldi* (T. L. McGinty, 1940) 2 shells, 18.3-19.4mm

Courtesy of North Carolina Shell Club,
Everett Long Collection

Lot 33



Miter Collection

- 1, Poverty Miter, *Strigatella paupercula* (Linnaeus, 1758) 3 shells 13-21.1mm
- 2, Carbon Miter, *Isara badia* (Reeve, 1844) 35.3mm
- 3, Shortened Miter, *Strigatella decurtata* (Reeve, 1844) 27mm
- 4, Eyed Miter, *Swainsonia ocellata* (Swainson, 1831) 20.3mm
- 5, Blunted Miter, *Strigatella retusa* (Lamarck, 1811) 17.6mm
- 6, Bloodsucker Miter, *Vexillum sanguisuga* (Linnaeus, 1758) 27.9mm
- 7, File Miter, *Domiporta filaris* (Linnaeus, 1771) 28.8mm
- 8, *Vexillum curviliratum* (G. B. Sowerby II, 1874) 37.8mm
- 9, *Vexillum sculptile* (Reeve, 1845) 30.2mm

Courtesy of North Carolina Shell Club,
Everett Long Collection

Lot 34 Two Miniature Shells

- 1, *Coralliophila rubrococcinea* Melvill & Standen, 1901, four shells, 18.5-28.6mm
- 2, Eugenia's Latiaxis, *Mipus eugeniae* (Bernardi, 1853) 27.5mm

Courtesy of North Carolina Shell Club,
Everett Long Collection





Lot 35

Ramose Typhis

Typhis ramosus T. Habe & Kosuge, 1970

17.2mm

Gift of Mique Pinkerton



Lot 37

Reticulated Cowrie

Mauritia maculifera (hawaiiensis)

F. A. Schilder, 1932

Hawaii, 62mm

Gift of Dave Watts



Lot 36

Arabian Cowrie

Though no data tag is present, it appears to be the prized, sub-specific *Mauritia arabica immanis*. It's large with a superior pattern of markings. Huge size compared to the average Arabian Cowrie is a distinguishing characteristic.

Mauritia arabica immanis

F. A. Schilder & M. Schilder, 1939

no data "E. Africa" 86.5mm

Courtesy of North Carolina Shell Club, Everett Long Collection

Lot 38



Hawaiian Cone Collection

Cones Dave Watts collected in Hawaii and expertly prepared

- 1, Rat cone, *Conus rattus* Hwass, 1792, 26mm
- 2, Vidua Cone, *Conus bandanus* Hwass, 1792, 22.4mm
- 3, Abbreviated Cone, *Conus abbreviatus* Reeve, 1843, 20.7mm
- 4, Hawaii Cone, *Conus sandwichensis* Walls, 1978, 21.2mm
- 5, Obscure Cone, *Conus obscurus* G. B. Sowerby I, 1833, 23mm
- 6, Pertusus Cone, *Conus pertusus* Hwass, 1792, 18.2mm
- 7, McBride's Cone, *Conus mcbridei* Lorenz, 2005, 2 sells, 6mm
- 8, Hebrew Cone, *Conus ebraeus* Linnaeus, 1758, 30mm
- 9, Planorbis Cone, *Conus planorbis* Born, 1778, 26.6mm
- 10, Lithograph Cone, *Conus litoglyphus* Hwass, 1792, 30mm
- 11, Textile Cone, *Conus textile* Linnaeus, 1758, 2 shells, 28.5-44.9mm
- 12, Bubble cone, *Conus bullatus* Linnaeus, 1758, 58.8mm
- 13, Imperial cone, *Conus imperialis* Linnaeus, 1758, 79.9mm

Gift of Dave Watts



Hawaii Cowrie Collection

Cowries Dave Watts collected in Hawaii and expertly prepared.

- 1, Gaskoin's Cowrie, *Cribrarula gaskoini* (Reeve, 1846) 16.2mm
- 2, Gaskoin's Cowrie, *Cribrarula gaskoini* (Reeve, 1846) ("firheri" male form) 13.7mm
- 3, Honey Cowrie, *Naria helvolvula hawaiiensis* (Melvill, 1888) 21mm
- 4, Isabell's Cowrie, *Luria isabella* (Linnaeus, 1758) "controversa", 2 shells, 13.8-21.9mm
- 5, Square-tooth Cowrie, *Lyncina sulcidentata* (J. E. Gray, 1824) 2 shells, 26.6-35.1mm
- 6, Cernica Cowrie, *Naria cernica marielae* (C. N. Cate, 1960) 22.8mm
- 7, Money Cowrie, *Monetaria moneta* (Linnaeus, 1758) 18.9mm

Gift of Dave Watts

Lot 40

Hawaii Auger Collection

Augers Dave Watts collected in Hawaii and expertly prepared.

- 1, Spotted Auger, *Terebra guttata* (Röding, 1798) 100.8mm
- 2, Lance Auger, *Hastula lanceata* (Linnaeus, 1767) 33.6mm
- 3, Marlinspike, *Oxymeris maculata* (Linnaeus, 1758) 22.7mm
- 4, Tiger Auger, *Oxymeris suffusa* (Pease, 1869) w/op., 26.3mm

Gift of Dave Watts



Lot 44

Book

The Shell Five Hundred Million Years of Inspired Design

Abbott, First printing including 82 hand-tipped color plates.

Some of the original rice paper cover-slips are missing. Colored pictures were printed directly to the pages in later printings.

Gift by Friends of North Carolina Shell Club



Lot 41

Hawaii Miter and Conch Selection

Conchs and Miters Dave Watts collected in Hawaii and expertly prepared.

- 1, Wilson's Conch, *Canarium wilsonorum* (Abbott, 1967) 3 shells, 16.2-24mm
- 2, Hell's Conch, *Hawaiistrombus hellii* (Kiener, 1843) 15.2mm
- 3, Newcomb's Miter, *Swainsonia newcombii* (Pease, 1869) 25.4mm
- 4, Contracted Miter, *Nebularia contracta* (Swainson, 1820) 31.1mm
- 5, Samar Conch, *Tridentarius dentatus* (Linnaeus, 1758) 34mm

Gift of Dave Watts



Lot 42

Three Hawaii Bivalves

Bivalves Dave Watts collected in Hawaii and expertly prepared.

- 1, Rasp Tellin, *Scutarcopagia scobinata* (Linnaeus, 1758) 32.1mm
- 2, Hieroglyphic Venus, *Lioconcha hieroglyphica* (Conrad, 1837) 29.1mm
- 3, Orbit Cockle, *Vasticardium hawaiiensis* (Dall, Bartsch & Rehder, 1938) 37.9mm

Gift of Dave Watts



Lot 43

Nine Miniature and/or Baby Hawaiian Shells

A selection of tiny shells Dave Watts collected in Hawaii and expertly prepared.

- 1, *Xenuroturrus cerithiformis* A. W. B. Powell, 1964, 36.1mm
- 2, Common Distorsio, *Distorsio anus* (Linnaeus, 1758) 22mm
- 3, Heavy Bonnet, *Casmaria ponderosa* (Gmelin, 1791) 20.2mm
- 4, Tectum Modulus, *Indomodulus tectum* (Gmelin, 1791) 16.8mm
- 5, Obelisk Vertagus, *Rhinoclavis sinensis* (Gmelin, 1791) w/op., 27mm
- 6, *Oliva ozodona sandwicensis* Pease, 1860, 20mm
- 7, *Monoplex comptus* (A. Adams, 1855) 26.7mm
- 8, *Psilaxis radiatus* (Röding, 1798) 16mm
- 9, Banded Vertagus, *Rhinoclavis fasciata* (Bruguère, 1792) 54.4mm

Gift of Dave Watts



Lots 45 - 48

Map Cowrie are an instantly recognizable shell. Offered are four variants for your consideration. Collectors sometimes assemble large series of the species. Map Cowrie from Kwajalein Atoll (Lots 46 & 47) are prized by collectors and difficult to obtain.

**Lot
45**



Map Cowrie

Leporicypraea mappa

(Linnaeus, 1758)

59.7mm Samar Philippines

Gift of Mique Pinkerton

**Lot
46**



Map Cowrie

Leporicypraea mappa viridis f. *eluceta*

F. Lorenz & A. Hubert, 2000

57mm Kwajalein Atoll

Gift of Mique Pinkerton

**Lot
47**



Map Cowrie

Leporicypraea mappa viridis f. *eluceta*

F. Lorenz & A. Hubert, 2000

55mm, Kwajalein Atoll

Gift of Mique Pinkerton

**Lot
48**



Map Cowrie

Leporicypraea mappa

(Linnaeus, 1758)

89.4mm Samar Philippines

Gift of Mique Pinkerton



Lot 49

Cape Cowrie, 2 shells

Cypraeovula capensis

(J. E. Gray, 1828)

28.5-29mm South Africa

Gift of Mique Pinkerton



Lot 50

Algoa Cowrie, 2 shells

Cypraeovula algoensis

(J. E. Gray, 1825)

20-23,7mm

Gift of Mique Pinkerton



Lot 51

Verheof's Cowrie

Cypraeovula fuscioruba

(H. Shaw, 1909)

35.6mm



Lot 52

Music Volute, 2 shells

Voluta polypleura

Crosse, 1876

Identified as (but not found in WoRMS or Molluscabase)

Voluta polypleura brunneocincta Poppe, 2001

no data, 54.4-69.6mm

Gift by Friends of North Carolina Shell Club



53, Dove Shell Collection

1, Variable Dove-shell, *Euplica varians*

(G. B. Sowerby I, 1832) 11.2mm

2, *Mitrella baculus* (Reeve, 1859)

three shells, 15.4-16.1

3, *Pyrene* species, 4 shells, 10.3-16.2mm

4, *Anachis miser* (G. B. Sowerby I, 1844) 15.8mm

5, Lightning Dove-shell, *Pyrene ocellata* (Link, 1807) 3 shells, 12.1-17.2mm

6, Dyson's Dove-shell, *Columbella dysoni* Reeve, 1859, 2 shells, 16.7-21.1mm

7, Dyson's Dove-shell, *Columbella dysoni* Reeve, 1859, 2 shells, 16.7-21.1mm

8, Blood-stained Dove-shell, *Columbella haemastoma* G. B. Sowerby I, 1832, 21.1mm

9, duPont's Dove-shell, *Parametaria dupontii* (Kiener, 1846) 5 shells, 21.8-24.9mm

10, *Parametaria macrostoma* (Reeve, 1858) 2 shells, 17.1-22mm

11, Stromboid Dove-shell, *Columbella strombiformis* Lamarck, 1822

eight shells, 20.7-28.3mm

12, Fat Dove-shell, *Columbella major* G. B. Sowerby I, 1832, 3 shells, 24.3-28.1mm

13, *Conella ovuloides* (C. B. Adams, 1850) 3 shells, 10.7-14.1mm

Courtesy of North Carolina Shell Club,

Everett Long Collection

Lot 53



Lot 54

Mawae's Latiaxis, 2 shells

"The Latiaxis" It's one of a large and varied genus of mollusk. This one is known by even those collectors who know little of the other species.

Latiaxis mawae (Gray, 1833)

one w/op., no data, 52.6-61mm

Two very large examples.

**Courtesy of North Carolina Shell Club,
Everett Long Collection**



Lot 55

Collection of tiny shells, 24 various species

Juveniles and miniatures. All identified, with data tags

**Courtesy of North Carolina Shell Club,
Everett Long Collection**



Lot 56

Turrid, 4 shells

Bathytoma atraetoides (R. B. Watson, 1881)

47.1-78.4mm Philippines

**Courtesy of North Carolina Shell Club,
Everett Long Collection**



Lot 58

Eloise's Acteon

Punctacteon eloisae (R. T. Abbott, 1973)

28.3mm no data, likely Masira Is. Oman

**Courtesy of North Carolina Shell Club,
Everett Long Collection**



Lot 57

Eloise's Acteon

Punctacteon eloisae (R. T. Abbott, 1973)

18.5mm no data, likely Masira Is. Oman

**Courtesy of North Carolina Shell Club,
Everett Long Collection**



Lot 59

Porcupine Thorny Oyster, 2 shells

Spondylus echinatus Schreibers, 1793

Philippines 52.2-90.7mm

**Courtesy of North Carolina Shell Club,
Everett Long Collection**



Lot 60

Common Hairy Triton

Monoplex pileare (Linnaeus, 1758)

w/op., 117 mm

**Courtesy of North Carolina Shell Club,
Everett Long Collection**

Lot 61

Giant Hary Triton

Monoplex parthenopium

(Salis Marchlins, 1793)

w/op, 126mm Brazil

**Courtesy of North Carolina Shell Club,
Everett Long Collection**





Lot 62

Trochel's Murex

Murex troscheli Lischke, 1868
w/op., No data, 159mm

Gift of Mique Pinkerton



Lot 63

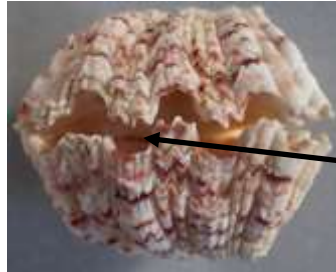
Bear Paw Clam, CITES II

Hippopus hippopus (Linnaeus, 1758)

Okinawa by E. Long 1980, 87.6mm

Appears it was eaten based on a damaged margin characteristic to a method of opening the bivalve

Courtesy of North Carolina Shell Club,
Everett Long Collection



Damaged margin resulting when a screw-driver or stout knife is thrust into the valves to open them in order to eat the mollusk.

Lot 64



Crocus Thorny Oyster

Spondylus croceus Schreibers, 1793
Philippines, 75mm

Courtesy of North Carolina Shell Club,
Everett Long Collection



Lot 65 Tusk Shell Collection

Large examples can be used as a trumpet. A piercing "toot" can be made by pursing your lips around the small end of the shell and sucking air in.

1, Elephant Tusk, *Dentalium elephantum* Linnaeus, 1758

four shells Guam, 73.8-84.6mm

2, Boar's Tusk, *Dentalium aprinum* Linnaeus, 1767

seventeen shells, Polilio Is. Philippines 56.5-70.3mm

3, Hungerford's Tusk, *Compressidentalium hungerfordi*

(Pilsbry & Sharp, 1897)(?) eight shells, Philippines 64.1-108.1mm

4, Hungerford's Tusk, *Compressidentalium hungerfordi*

(Pilsbry & Sharp, 1897) two shells, Philippines, 114.8-115.8mm

Gift of Mique Pinkerton



Lot 66

Colorful Queen Miter, 3 shells

Vexillum coloscopulus

J. M. Cate, 1961

Philippines, 57.9-67.2mm

Gift of Mique Pinkerton



Lot 67

Two Star-shells, Philippines

Peach Bolma, *Bolma persica* (Dall, 1907) 43.7mm

Girgyllus Star-shell, *Bolma girgyllus*

(Reeve, 1861) 50.7mm

Gift of Mique Pinkerton



Lot 68

Bullate Volute, dead-beach

Callipara bullatiana

C. S. Weaver & duPont 1967

Jeffreys Bay SA, 57.6mm

Gift of Mique Pinkerton



Lot 70

Royal Bonnet

Sconsia grayi A. Adams, 1855

Gulf of Mexico by Shrimpers 53.1mm

Gift of Mique Pinkerton



Lot 73

Plicate Conch, 2 shells

Dolomena plicata (Röding, 1798)

35.2-38mm no data, labeled as "albino"

Gift of Mique Pinkerton



Lot 69

Two Bonnets

1, Iredale's Bonnet, *Semicassis zeylanica*

(Lamarck, 1822) identified as *Phalium lobatum iredalei*

Bayer w/op., 48.6mm, South Africa

2, Japanese Bonnet, *Semicassis bisulcatum*

(Schubert & J. A. Wagner, 1829) (identified as form

sophia Brazier, 1872), two shells, 39.8-48.9mm

Gift of Mique Pinkerton



Lot 71

Victor Dan's Delphinula

two shells

Angaria vicdani Kosuge, 1980

45.8-49.5mm Philippines

Courtesy of North Carolina

Shell Club,

Everett Long Collection

&

Gift of Mique Pinkerton



Lot 72

Purplish Clanculus

Clanculus puniceus (R. A. Philippi, 1846)

Oman, by Donald Bosch, 20.1mm

there is a hole inside the aperture

Courtesy of North Carolina Shell Club,

Everett Long Collection

Minimum Bid Increments

\$1 to \$50 = \$1

\$50 to \$100 = \$5

\$100 to \$300 = \$10

\$300 and up = \$25

Bid increments higher than the minimum accepted

Even dollar increments within the ranges defined only

For lots of estimated high dollar value we may begin bidding greater than

\$1.

Payment is due at close of the auction.